

DATE: June 29, 2018
TO: Mayor & Council Members
FROM: Mike Anderson, Assistant to the City Manager
SUBJECT: City Manager's Report

Highway 14 Update

Please see attached!

Water Park

Friday mornings: Itty Bitty Beach Party 10 am to 11:45 am
SHIP/Waseca County Public Health Breastfeeding tent available Friday through Sunday
We are open on the 4th of July regular scheduled hours 12 noon to 7 pm

2018 Election Signage

Regarding the 2018 election year, starting on June 29 and ending on November 16, local campaign sign ordinances will not be enforced during this time per *Minnesota Statutes 211B.045*. Please note that signs cannot be placed in City right-of-way areas.

Waseca Area Events

June 29

The Princess and the Pea, 7pm
Central Building Auditorium, 501 E Elm Ave

June 30

Chautauqua 2018, at Trowbridge Park, Waseca, 11:00 AM - 4:00 PM
Trowbridge Park, next to the Waseca Public Library, 408 N State St
The Princess and the Pea, 2pm
Central Building Auditorium, 501 E Elm Ave
Live Music at Club 57, 7:00 PM - 10:00 PM
Club 57, 204 2nd St SW

July 1

Watermelon Slush, 5:30 PM - 7:30 PM
Pleasant Grove Pizza Farm, 41142 160th St

July 3

Stitchers in Time Quilt Guild & Katy Collier (Through Aug. 3)
Waseca Art Center, 200 North State ST

July 4

Lakefest – Clear Lake Park

- Lakefest Freedom Walk/Run, 7:30 AM - 12:00 PM

- Lakefest Music Festival, 11:00 AM - 10:00 PM

-Fireworks at dark

July 5

Waseca Water Carnival, 11:00 AM - 1:00 PM

Trowbridge Park, next to the Waseca Public Library (408 N State ST)

Additional Attachments

- July Calendar
- Library Events

Waseca Area Chamber of Commerce Events can be seen here:

<http://www.wasecachamber.com/events/>



508 South State Street ■ Waseca, Minnesota 56093-3097
507-835-9700 ■ FAX 507-835-8871 ■ www.ci.waseca.mn.us

June 29, 2018

Old TH 14/Elm Avenue Weekly Construction Update – Week 11

The City of Waseca and its project partners send out and publish a weekly construction update on the Old TH 14/Elm Avenue Reconstruction Project. This weekly update also is available on the Project website <http://ci.waseca.mn.us/old-trunk-hwy-14elm-avenue-updates/> and is published online via the Waseca County News. Questions about the contents of the weekly updates or about the project in general can be directed to the City's contracted consulting engineer Joe Palen, Project Manager with Stantec at either 507.529.6036 or joseph.palen@stantec.com or Tom Kellogg, Waseca City Engineer at either 507.835.9716 or CityEngineer@ci.waseca.mn.us Additionally, project representatives have set aside time every Thursday from 11:45 am to 12:30 pm to be available at Waseca City Hall, 508 South State St, Waseca, MN 56093 to answer questions. No appointment is necessary and if this time doesn't work please contact either Mr. Palen or Mr. Kellogg to set up a meeting at a mutually convenient time.

If there is an emergency within the construction limits outside of normal business hours please call 507.835.9718 and the 24 hour answering service will contact the appropriate parties.

Previous Week Review (June 25 to June 30)

Work completed on Elm Avenue East this week included the placement of draitile, sand and gravel base between State Street (TH 13) and 2nd Street E. In addition, the contractor continues to prepare boulevards for sod placement and also completed some miscellaneous concrete work and driveway construction between 3rd Street and Clear Lake. Construction of a pedestrian crosswalk flashing system between 4th and 6th Street E was completed. Roadway subcut activities continued along Clear Lake between 13th Street SE and Kiesler's Campground.

On the west side of the project, the contractor completed installation of storm sewer facilities on the east side of 8th Street NW and began installing storm sewer from 6th towards 7th Street NW. Sanitary and water service installations were completed between 6th and 8th Street W. Sanitary Sewer and watermain reconstruction was completed through the 4th Street W intersection with watermain reconstruction extending to near the Napa Store. Street light installation is complete and lights have been energized from the west end of the project to near 10th Street NW. The contractor also completed several miscellaneous concrete pours for curb and gutter, pedestrian ramps and driveways between Brown Avenue and Loon Lake.

Next Week Look Ahead (July 2 to June 7)

Project Area East of TH 13

Roadway pavement removals, subgrade excavation and roadway sand base construction is planned between the west entrance to Kiesler's Campground and a point 500-feet west of 13th Avenue SE.

Sod installation is again scheduled to occur early in the week on Elm Avenue between 3rd Street E and Clear Lake. The contractor will periodically water the new sod; however, **residents are also strongly encouraged to frequently water the sod along their properties and limit mowing of new sod to a height of ~3-inches or greater for the next 3 months.** Resident cooperation with sod establishment through the requested watering and mowing practices are an important component to the establishment of attractive boulevards.

From TH 13 / State Street to 3rd Avenue E., concrete curb and gutter installation is scheduled early in the week followed by concrete paving later in the week. Please note that construction activities will continue to limit access to the adjacent businesses, alleys and parking lot facilities. See the Traffic Control and Access notes and figures for additional information.

Project Area West of TH 13

Storm sewer construction is scheduled to occur between 6th and 7th Street NW next week. In addition, the contractor will reconstruct individual sewer and water services to each of the adjacent properties (between the new mains and the property lines) from 4th to 6th Street NW. Sanitary Sewer reconstruction is scheduled between 4th Street W and a point about 250-feet west of 2nd Street W (near the Napa Store). As a result of the planned construction in this area, access to the adjacent businesses from Elm Avenue, between 4th Street W and the Napa Store will be very limited. Please see the Traffic Control / Detour Notes below for additional information on traffic and parking impacts. Street subcut activities are also scheduled to begin from 8th Street NW toward 6th Street NW later in the week.

Traffic Control/Detour Notes

During the duration of the project and through the project limits, which extend from the western City limits west of Brown Avenue to the eastern City limits east of Clear Lake Drive, thru traffic (traffic traveling to/from Mankato and Owatonna directions) will be detoured off Old TH 14 on the east side at NW 92nd Ave/CSAH 18 near Meriden and on the west side at 110th St/CSAH 27. Portions of Old TH 14 within the project limits may be signed "Road Open to Local Traffic" or something similar. *Please keep in mind that "local traffic/access" is defined as having direct access on Old TH 14 or having business with someone or a business who has direct access on Old TH 14. If you do not fall into either of these two categories, you should not be on Old TH 14 within the project limits at any time. Travel on Old TH 14 within the project limits should take place only when there is no other possible alternative.*

An updated local alternative access map is attached showing proposed access routes based on the following week's proposed construction activities. Note: this map is updated weekly, as construction progresses and every effort will be made to keep this map updated and as accurate as possible, but construction activities may require alterations to access routes before a new map is sent out. An interactive copy of this map is also available at:

<https://wasecacity.maps.arcgis.com/apps/PublicInformation/index.html?appid=56178b878ee64926be6fd7be5f6e4460>

Project Area West of TH 13

Two-way access to Vista Villa Mobile Home Community, HWY 14W Mini-Storage, Deml Ford, Waseca Chrysler, and Rent N' Save is open from the west, via Old TH 14 or via Brown Ave-Old TH 14. Traffic traveling west from central Waseca to Vista Villa and surrounding businesses should access Old TH 14 from 362nd Ave./120th St. (Lake St/Experiment Station Road) and then proceed west on Elm Avenue. See attached map for alternative access routes within this area.

Old TH 14 may have occasional lane closures from Brown Avenue to 8th Street NW; however, a lane of traffic in each direction will be maintained through the work zone for local traffic only. Access to the Veterans Landing, Latham Place / Lake Shore Inn and impacted residential and business properties in between will be to the west only, via Elm Avenue. Access to Latham Place / Lake Shore Inn will continue to be diverted from 8th Street NW to the temporary access constructed to the west and utilized last year.

Elm Avenue between 8th Street W and a point ~250' west of 2nd Street W (near the Napa Store) will be closed for utility construction. Access from Elm Avenue to adjacent properties within this area will be very limited and we encourage property owners to park on adjacent streets and access their properties via the sidewalk or use alternate side or rear vehicle access routes. Access to Kwik Trip, United Feed, Cassie's Classic Cuts will be from the south via 2nd Avenue SW. Access to Tesch Service Center and Sacred Heart Church / School will be from 4th Street W.

No access or construction impacts are currently planned on 6th Street NW or 2nd Avenue NW over the next week.

Project Area East of TH 13

Access to Kiesler's Campground will continue to be from the East on Old TH 14 / Elm Avenue to the primary entrance to the Campground. Note that the Clear Lake Drive / Elm Avenue E intersection is also opened to traffic and can be used to access Kiesler's Campground. Access to Barney's Drive-In, Lodging at Lake Aire and Memorial Park is open, via 8th Street SE to 4th Street SE to 13th Street SE to Old TH 14 / Elm Avenue and then east or west bound on the existing Old TH 14 roadway via temporary gravel road. The secondary (western) access to Kiesler's Campground will be closed. Access to Maplewood Park will be only via Clear Lake Drive as shown on the Local Access Map and access to the Maplewood businesses will be via Elm Avenue / Old TH 14.

The Clear Lake Trail adjacent to Old TH 14 has numerous temporary aggregate surfaced patches and is in close proximity to construction activities associated with the reconstruction of Old TH 14. The trail within this area is open for pedestrian use but, please use extra caution when using the trail adjacent to the construction zone and do not depart from the trail.

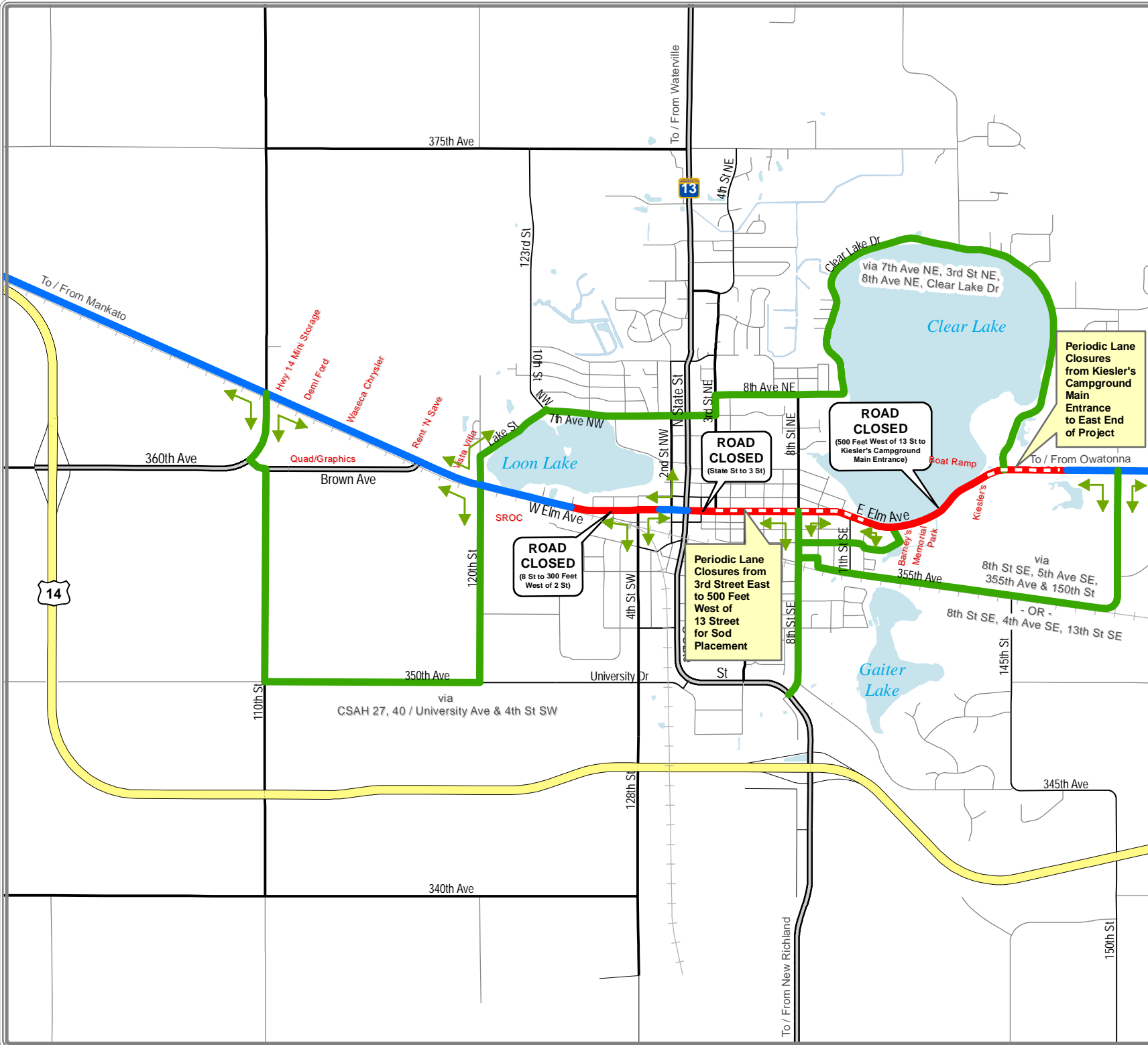
The alleys and businesses north and south of Elm Avenue (between TH 13 / State Street and 3rd Street E) will not have access to Elm Avenue. When access from Elm Avenue is closed due to construction activities, we ask drivers to use a modified access configuration that provides one-way access through each alley (north bound only) and the adjacent Municipal / Snap Fitness Parking lot (south bound) to complete a "horse shoe" to access businesses and parking facilities within the area. Please see the attached Local Access Alternative Routes for an illustration of how access in this area will occur. Please honor the "No Parking" signage in these areas to allow traffic to circulate using the horse shoe configuration.

Fourth of July Fireworks Display:

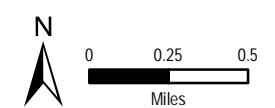
Reconstruction of Old TH 14 / Elm Avenue near Clear Lake will impact traffic patterns and viewing options for the upcoming 4th of July Fireworks display. Please note that Old TH 14 between a point 500-feet west of 13th Street SE and the primary access to Kiesler's Campground will be closed to through traffic and will not be available for vehicle parking to view the fireworks display. Clear Lake Trail will be open to pedestrian traffic and fireworks display viewing along undisturbed areas adjacent to the trail. In addition, Memorial Park will be accessible for use and fireworks display viewing via 13th Street SE with access to the primary parking lot provided by a temporary gravel road through the Elm Avenue construction corridor. Please note that "No Parking" is permitted on the temporary gravel access road to the Memorial Park Parking Lot. Maplewood Park will be open and may be accessed off Clear Lake Drive only. Please see the attached map for additional information regarding 4th of July access and fire works display viewing.

Old Trunk Highway 14 Elm Avenue Project

Non-Posted Local Access Alternative Routes Beginning July 2, 2018



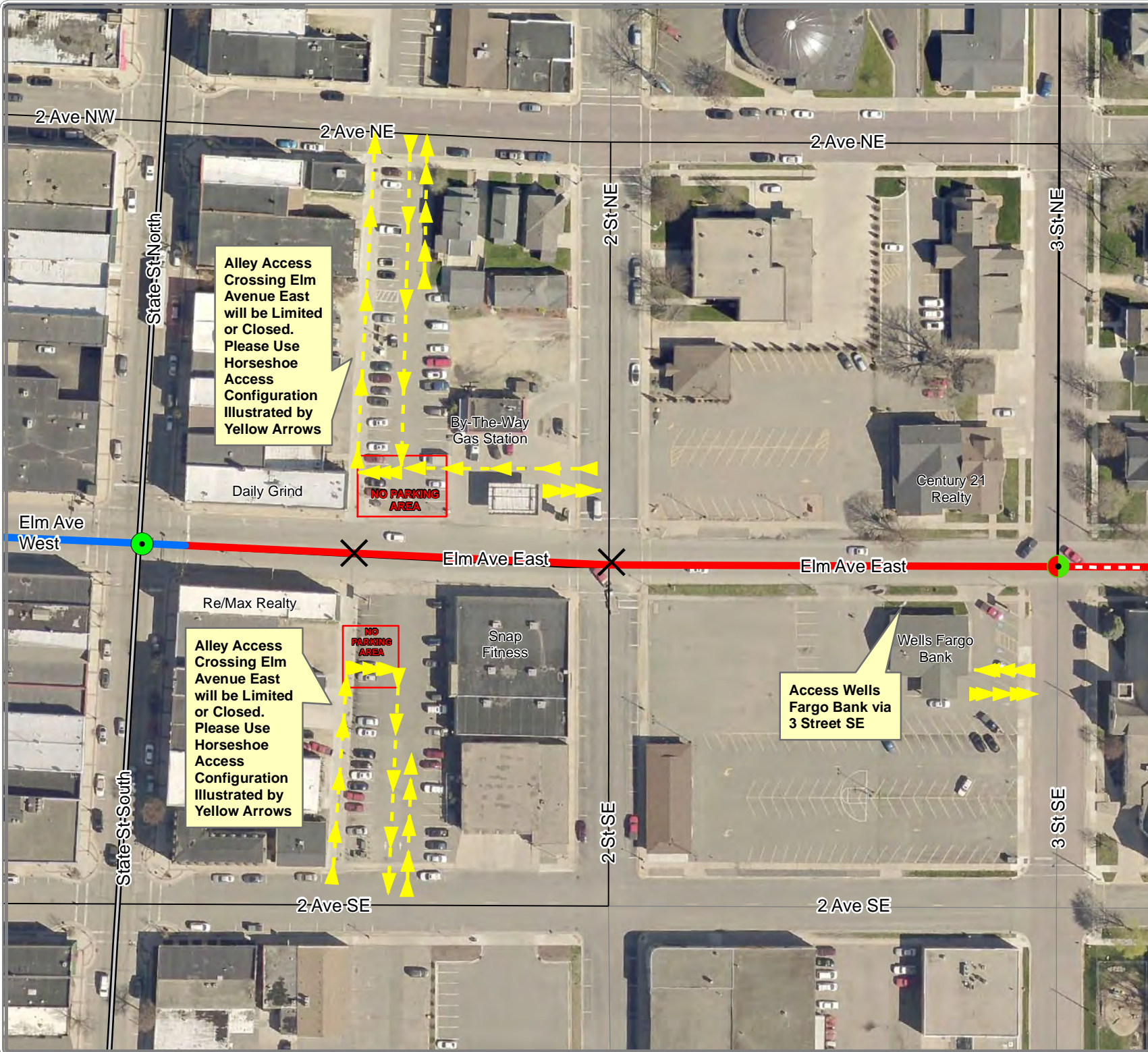
- Current Construction Area
- Alternative Route
- Road Open for Local Resident and Local Business Access - Detour Route Activated
- - - Periodic Lane Closures Due to Construction (Local Traffic Only)



Disclaimer: The data represented on this document is neither a legally recorded map nor a survey, and is intended for reference purposes only. The information presented has not been verified and neither the City of Waseca, nor its employees or agents makes any representation to the accuracy of the features and data presented here within. This map was created through the use of several city, county, state and federal data sources. For specific information regarding this map, or to report errors or omissions, contact the City of Waseca Engineering Department.

Old Trunk Highway 14 Elm Avenue Project

Non-Posted Local Access Alternative Routes Beginning July 2, 2018

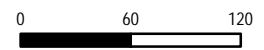


Alley Access Crossing Elm Avenue East will be Limited or Closed. Please Use Horseshoe Access Configuration Illustrated by Yellow Arrows

Alley Access Crossing Elm Avenue East will be Limited or Closed. Please Use Horseshoe Access Configuration Illustrated by Yellow Arrows

Access Wells Fargo Bank via 3 Street SE

- Current Construction Area
- Alternative Route
- Road Open for Local Resident and Local Business Access - Detour Route Activated
- X Road Closed to All Traffic
- Intersection Open to Traffic Crossing Old TH 14 / Elm Ave EXCEPT When Work Is Taking Place In Intersection
- Intersection Open to Traffic Crossing Old TH 14 / Elm Ave



Disclaimer: The data represented on this document is neither a legally recorded map nor a survey, and is intended for reference purposes only. The information presented has not been verified and neither the City of Waseca, nor its employees or agents makes any representation to the accuracy of the features and data presented here within. This map was created through the use of several city, county, state and federal data sources. For specific information regarding this map, or to report errors or omissions, contact the City of Waseca Engineering Department.

FIREWORKS DISPLAY VIEWING & ACCESS RESTRICTIONS

Maplewood
Park

Maplewood Park
Open for Viewing.
Access via Clear
Lake Drive.

Clear Lake Trail
Open to Pedestrian
Traffic and Limited
Space Available for
Viewing of Fireworks.

Clear Lake

Kiesler's
Campground

Elm Avenue Closed
within Roadway
Reconstruction
Area. No Driving,
Parking, or
Pedestrian Traffic
Permitted.

ELMAVE

Memorial Park Open
for Fireworks Viewing.
Access Park via 13th Street SE
and Temporary Gravel Road
on Elm Avenue to Parking Lot.

Memorial
Park

Reference Map Only





WASECA-LE SUEUR REGIONAL LIBRARY SYSTEM
408 N STATE ST * WASECA, MN 56093 * 507-835-2910
Stacy Lienemann, Director

FOR IMMEDIATE RELEASE: June 27, 2018

Wonder Party

Celebrate the book *Wonder* by R.J. Palacio before the movie comes out at Waterville Public Library on Monday, July 9th at 5 pm. We'll celebrate WONDERfully kind acts, WONDERful people, and WONDERstruck projects. Registration required. Geared for ages 7-12.

#

MEDIA: Please contact Waterville Public Library (507-362-8462 or libtlw@tds.lib.mn.us) with questions.

Level Up: Bloxels

Build a video game from scratch using a Bloxel gameboard, colored blocks, and an iPad at Janesville Public Library on Monday, July 9th at 2 pm. Registration required. This free event is geared for ages 7-12. Stop by the Library to register or call 507-234-6605.

Sponsored by the Jane and John King Family Fund

#

MEDIA: Please contact Janesville Public Library (507-234-6605 or libtlj@tds.lib.mn.us) with questions.

Level Up: Keva Planks

Solve these building challenges and design amazing structures using Keva planks at Elysian Area Library on Monday, July 9th at 6 pm. This free event is geared for ages 7-12. Due to limited space, registration is required. Stop by the Library to register or call 507-267-4411.

#

MEDIA: Please contact Elysian Area Library (507-267-4411 or jrezac@tds.lib.mn.us) with questions.

Movie Music Trivia

Buzz in to compete as a family in a movie music trivia game against other movie music buffs at Waseca Public Library on Monday, July 9th at 4:30 pm, 5:30 pm, or 6:30 pm. Registration required. This free event is geared for ages 7-12. Registration required. Stop by the Library to register or call 507-835-2910.

#

MEDIA: Please contact Waseca Public Library (507-835-2910 or bbleeker@tds.lib.mn.us) with questions.

Level Up: Lego Marble Trampolines

Combine Legos, tracks, marbles and a mini trampolines to create a wild chain reaction at New Richland Public Library on Tuesday, July 10th at 10:30 am. Registration required. This free event is geared for ages 6-12. Stop by the Library to register or call 507-465-3708.

#

MEDIA: Please contact New Richland Library (507-465-3708 or nrplib@tds.lib.mn.us) with questions.

Teen Song Jeopardy

Teens can test out their pop music knowledge to win fun prizes on Tuesday, July 10th at 2 pm at Waseca Public Library. Free and exclusively for ages 13-18.

#

MEDIA: Please contact Waseca Public Library (507-835-2910 or lienemann@tds.lib.mn.us) with questions.

Harry Potter Yoga

Grab your wands! Learn self-soothing, relaxing, and focusing skills while stretching through the plot line

of *Harry Potter and the Sorcerer's Stone*. This free event is open to the public and will begin at 11 am on Wednesday, July 11th at Waseca Public Library.

#

MEDIA: Please contact Waseca Public Library (507-835-2910 or bbleeker@tds.lib.mn.us) with questions.

Yarn Weaving for Adults

Create a decorative wall hanging using a variety of weaving techniques at 6 pm on Wednesday, July 11th at Elysian Area Library. Free. Registration required.

#

MEDIA: Please contact Elysian Area Library (507-267-4411 or jrezac@tds.lib.mn.us) with questions.

Level Up: Engineering Extravaganza

Think creatively to solve building challenges at Le Center Public Library on Thursday, July 12th at 1:30 pm. This free event is geared for ages 7-12. Due to limited space, registration is required. Stop by the Library to register or call 507-357-6792.

#

MEDIA: Please contact Le Center Public Library (507-357-6792 or libtlc@tds.lib.mn.us) with questions.

Level Up: 3Doodlers

Doodle in the air! Create projects in 3D with this cool pen by drawing whatever you like or using molds to create ready-to-make projects at Le Center Public Library on Friday, July 13th at 1:30 pm. This free event is geared for ages 7-12. Due to limited space, registration is required. Stop by the Library to register or call 507-357-6792.

#

MEDIA: Please contact Le Center Public Library (507-357-6792 or libtlc@tds.lib.mn.us) with questions.

Swim and Stories at Waseca Water Park

Waseca Public Library will lead a special Romp and Rhyme Story Time at the Waseca Water Park at 10 am on Saturday, July 14th. Keep cool and enjoy the water while sharing books, stories, rhymes, music, and movement at this family story time.

#

MEDIA: Please contact Waseca Public Library (507-835-2910 or bbleeker@tds.lib.mn.us) with questions.

July 2018

July 2018						
Su	Mo	Tu	We	Th	Fr	Sa
1	2	3	4	5	6	7
8	9	10	11	12	13	14
15	16	17	18	19	20	21
22	23	24	25	26	27	28
29	30	31				

August 2018						
Su	Mo	Tu	We	Th	Fr	Sa
			1	2	3	4
5	6	7	8	9	10	11
12	13	14	15	16	17	18
19	20	21	22	23	24	25
26	27	28	29	30	31	

	Sunday	Monday	Tuesday	Wednesday	Thursday	Friday	Saturday
Jul 1 - 7	Jul 1	2 5:00pm HPC (Council Chambers)	3 11:30am Park Board (Northwest Park) 12:00pm Airport Board (Airport) 7:00pm Council Mtg. (Council Chambers)	4 FOURTH OF JULY	5	6	7
Jul 8 - 14	8	9 11:30am B.E.S.T. (SROC)	10 5:00pm DWT (PBS) 7:00pm Plann. Comm. (Cncl. Chambers)	11 12:00pm EDA (Council Chambers)	12 6:00pm WS City Council Storm Sewer Update (PSB)	13	14
Jul 15 - 21	15	16	17 7:00pm Council Mtg. (Council Chambers)	18	19	20	21
Jul 22 - 28	22	23	24	25 6:00pm FireRelief Assoc. (Fire Hall)	26	27	28
Jul 29 - Aug 4	29	30	31	Aug 1	2	3	4